

HOPES HILL PROJECT

Drilling Confirms Mineralisation over 1.3km, Stage 2 Drilling Escalated

Highlights:

- Drilling in the Northern Zone of the Company's flagship Hopes Hill gold project shows further wide and high-grade mineralisation. The results include outstanding drill intercepts of:
 - GHHHRC0017: **16m @ 3.1 g/t Au from 101m** including:
 - Incl. 9m @ 5.2 g/t Au from 108m
 - Incl. 2m @ 21.4 g/t Au from 115m
 - GHHHRC0011: **9m @ 3.3 g/t Au from 134m** including:
 - 2m @ 7.8 g/t Au from 140m and
 - GHHHRC0010: **6m @ 2.2 g/t Au from 120m:**
 - GHHHRC0009: **16m @ 1.6 g/t Au from 137m.**
- Results now show the high-grade mineralisation has been intercepted over the entire 1.3km length of the historic Hopes Hill pit in the current drilling campaign.
- The intercepts up to 140m below surface which remain open down dip support the depth potential of the northern end of the pit which was historically mined to depths of only 40-70m.
- Based on the results to date, a Stage 2 RC drill program has been spurred forward to immediately follow up Stage 1.

Golden Horse Minerals Limited (**ASX: GHM**) (**Golden Horse** or **Company**) is pleased to announce recent assay results from holes drilled at its wholly owned Hopes Hill gold project at Southern Cross in Western Australia. These latest results continue to highlight the presence of wide and high-grade mineralisation, over the entire 1.3km length of the existing Hopes Hill pit.



Golden Horse Managing Director, Nicholas Anderson said:

“While recent announcements have provided high grade intercept results from the central and southern parts of the Hopes Hill pit, these results from the northern end have confirmed the high-grade nature of the gold mineralisation has been intercepted throughout the entire 1.3km length of the historic Hopes Hill pit. In particular, the shallow nature of the result from GHHHRC0017 (16.1m at 3.1 g/t gold from 101m) is hugely encouraging.

“The northern pit area was previously mined to relatively shallow depths (40-70 metres below surface) owing to previous tenement boundary constraints but with Golden Horse consolidating this area, the potential for mineralisation at depth is finally being explored. Our confidence in the project keeps growing and further validates Hopes Hill as the flagship asset within our portfolio.

“Drilling is continuing along the entire length of the pit area and given the excellent results the Company intends to proceed immediately with the Stage 2 program consisting of further RC drilling. I look forward to providing further updates to the market in coming weeks.”

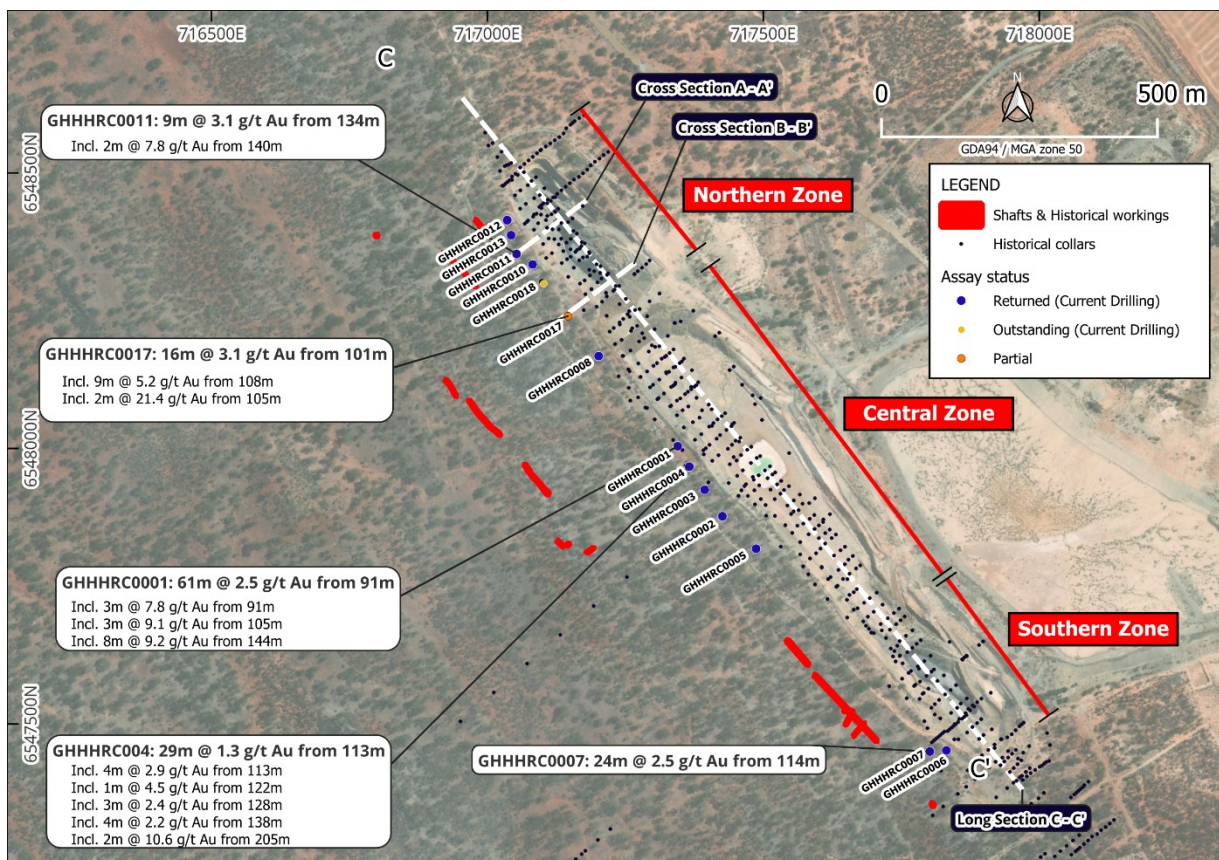


Figure 1: Hopes Hill recent and historic drill holes.

Hopes Hill Drilling

Reverse circulation (RC) drilling commenced late January 2025 targeting shallow high-grade mineralisation below the historical Hopes Hill open pit as part of a Stage 1 drilling program. The aim of Stage 1 was to confirm historical drill data and test the potential of the mineralisation immediately below the old pit floor and to determine the continuity along strike. The original pit depth was limited by tenement boundary constraints (now removed) which severely restricted drill pad location to test the mineralisation immediately below the pit floor. There has been minimal drilling since mining ceased in the mid 1990's.

Over 4,000m have been completed to date with the Stage 1 program expected to be completed in coming weeks. These latest results, coupled with previous reported broad intervals (such as GHHHRC0001: 61m

at 2.5 g/t gold from 91m (downhole) and GHHHRC0007: 24m at 2.5 g/t gold from 144m)^{1,2} clearly indicate the continuity of the mineralisation over the entire pit length. Significant results from the Stage 1 drill program received to date are reported in Tables 2 and 3 (cumulative with those reported to ASX on 18 February 2025 and 6 March 2025).

Given the success of Stage 1 in confirming historical results and identifying mineralised strike extensions, the Company intends to maintain continuous drilling and immediately progress a Stage 2 drill program.

Stage 2 drilling will progressively test the mineralisation at greater depths to better define the interpreted higher grade south plunging shoots in the overall mineralised envelope.

Further results will be released progressively as they are returned from the assay laboratory.

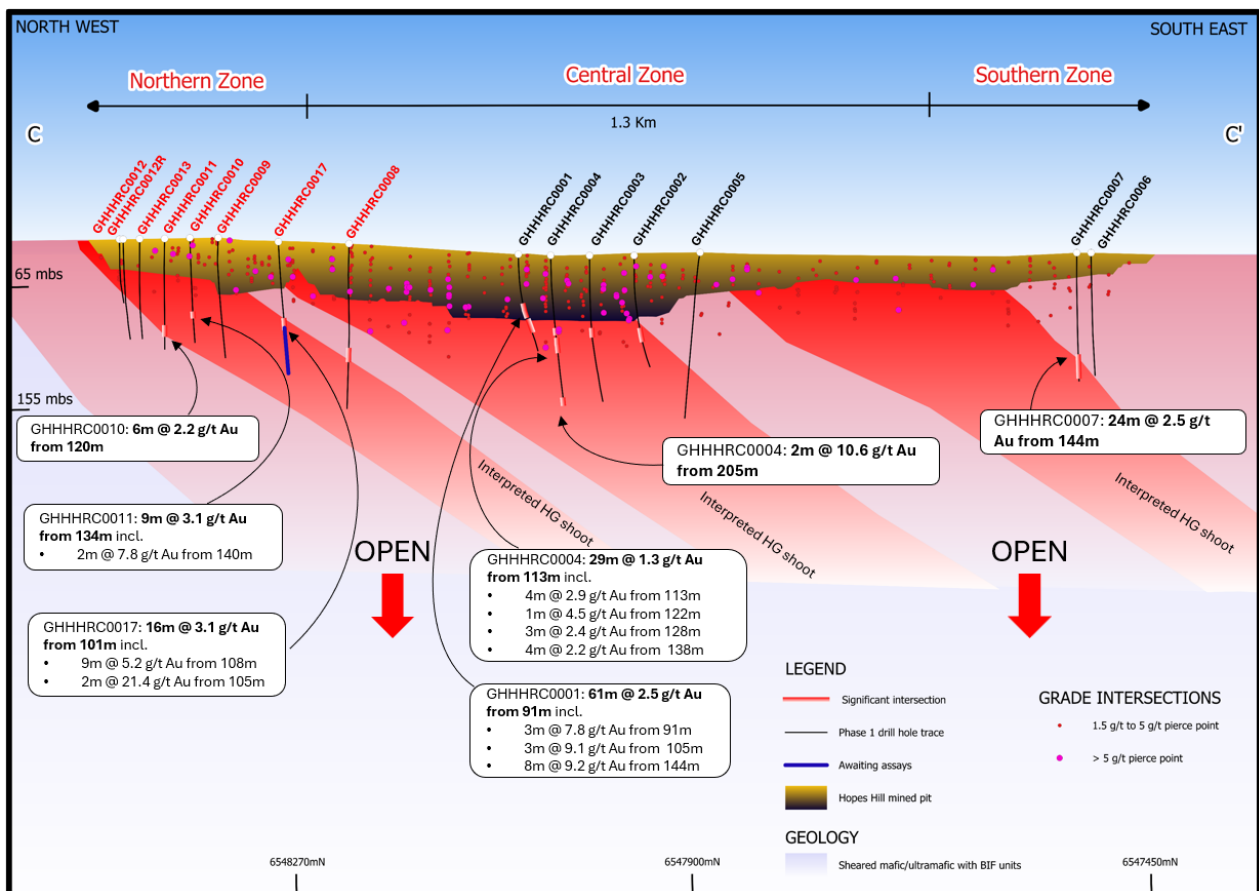


Figure 2: Schematic long section C – C' view of grade intersection points - With Interpreted Southern Plunge of higher-grade mineralisation.

¹ Refer ASX announcement 18 February 2025: Outstanding Results from Phase 1 Hopes Hill Drilling.

² Refer ASX announcement 6 March 2025: Hope Hill Project Delivers Further Outstanding Results.

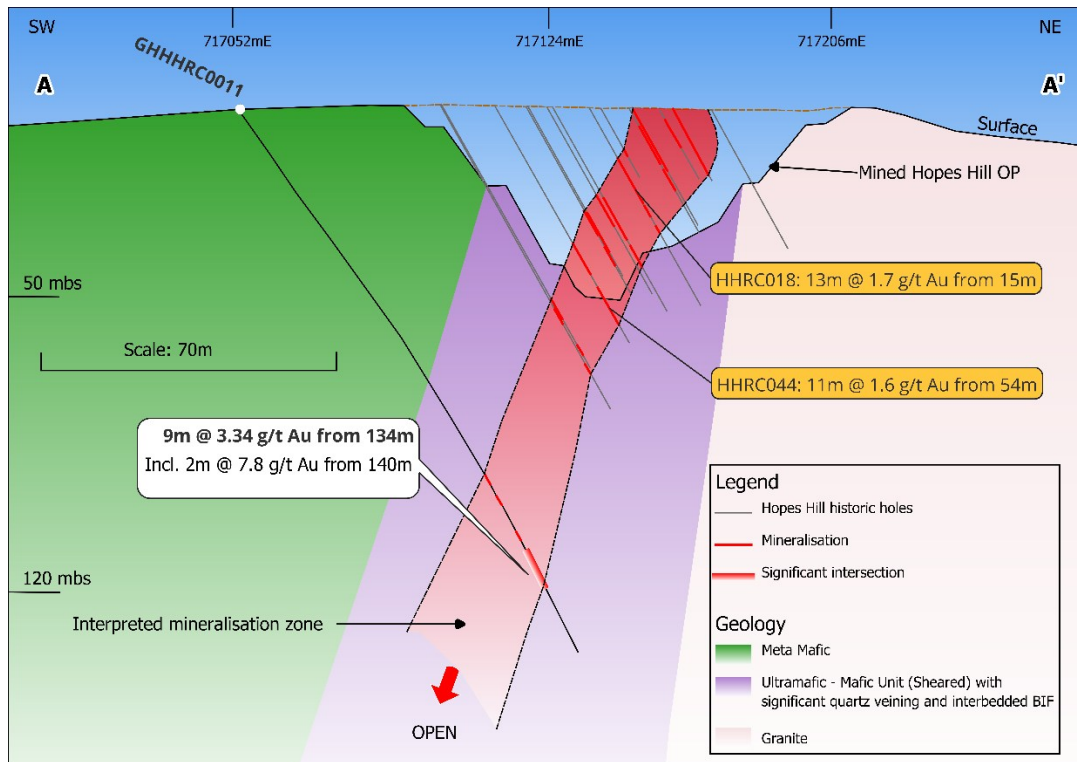
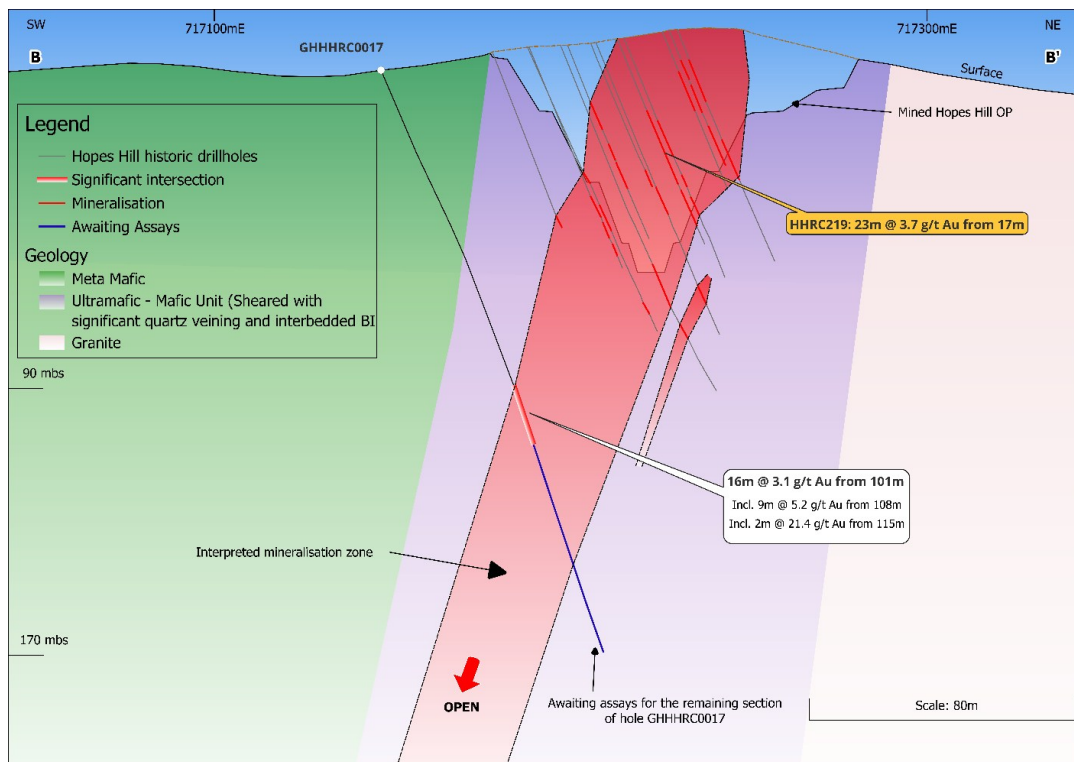


Figure 3: Cross section A – A' +/- 20m view of GHHHRC0011.



**Figure 4: Cross section B – B' +/- 20m view of GHHHRC0017.
(Results pending for lower part of hole)**

For and on behalf of the Board



Nicholas Anderson
Managing Director & CEO

This announcement was approved for release by the Board of Golden Horse Minerals Limited.

For more information contact:

Nicholas Anderson
Managing Director & CEO
Email: nicholas.anderson@goldenhorseminerals.com.au

Josh Conner
Chief Operating Officer
Email: josh.conner@goldenhorseminerals.com.au

Media

David Tasker
Chapter One Advisors
Email: dtasker@chapteroneadvisors.com.au
+61 433 112 936

Disclaimer

This announcement has been prepared by Golden Horse Minerals Limited based on information from its own and third-party sources and is not a disclosure document. No party other than the Company has authorised or caused the issue, lodgement, submission, despatch or provision of this announcement, or takes any responsibility for, or makes or purports to make any statements, representations or undertakings in this announcement. Except for any liability that cannot be excluded by law, the Company and its related bodies corporate, directors, employees, servants, advisers and agents disclaim and accept no responsibility or liability for any expenses, losses, damages or costs incurred by you relating in any way to this announcement including, without limitation, the information contained in or provided in connection with it, any errors or omissions from it however caused, lack of accuracy, completeness, currency or reliability or you or any other person placing any reliance on this announcement, its accuracy, completeness, currency or reliability. Information in this announcement which is attributed to a third-party source may not have been checked or verified by the Company. This announcement is not a prospectus, disclosure document or other offering document under Australian law or under any other law. It is provided for information purposes and is not an invitation nor offer of securities or recommendation for subscription, purchase or sale in any jurisdiction. This announcement does not purport to contain all the information that a prospective investor may require in connection with any potential investment in the Company. It should be read in conjunction with, and full review made of, the Company's disclosures and releases lodged with the Australian Securities Exchange (ASX) and available at www.asx.com.au. Each recipient must make its own independent assessment of the Company before acquiring any securities in the Company.

All dollar values are in Australian dollars (A\$ or AUD) unless otherwise stated.

Forward looking information

This announcement contains forward-looking statements. Wherever possible, words such as “intends”, “expects”, “scheduled”, “estimates”, “anticipates”, “believes”, and similar expressions or statements that certain actions, events or results “may”, “could”, “would”, “might” or “will” be taken, occur or be achieved, have been used to identify these forward-looking statements. Although the forward-looking statements contained in this ASX announcement reflect management’s current beliefs based upon information currently available to management and based upon what management believes to be reasonable assumptions, the Company cannot be certain that actual results will be consistent with these forward-looking statements.

A number of factors could cause events and achievements to differ materially from the results expressed or implied in the forward-looking statements. These factors should be considered carefully and prospective investors should not place undue reliance on the forward-looking statements.

Forward-looking statements necessarily involve significant known and unknown risks, assumptions and uncertainties that may cause the Company's actual results, events, prospects and opportunities to differ materially from those expressed or implied by such forward-looking statements. Although the Company has attempted to identify important risks and factors that could cause actual actions, events or results to differ materially from those described in forward-looking statements (refer in particular to the “Risk Factors” section of the Company’s prospectus dated 5 November 2024), there may be other factors and risks that cause actions, events or results not to be anticipated, estimated or intended, including those risk factors discussed in the Company’s public filings. There can be no assurance that the forward-looking statements will prove to be accurate, as actual results and future events could differ materially from those anticipated in such statements. Accordingly, prospective investors should not place undue reliance on forward looking statements. Any forward-looking statements are made as of the date of this announcement, and the Company assumes no obligation to update or revise them to reflect new events or circumstances, unless otherwise required by law.

This announcement may contain certain forward-looking statements and projections regarding timing of receipt of exploration results, planned capital requirements and planned strategies and corporate objectives. Such forward-looking statements/projections are estimates for discussion purposes only and should not be relied upon. They are not guarantees of future performance and involve known and unknown risks, uncertainties and other factors, many of which are beyond the control of the Company. The forward-looking statements/projections are inherently uncertain and may therefore differ materially from results ultimately achieved. The Company does not make any representations and provides no warranties concerning the accuracy of the projections and disclaims any obligation to update or revise any forward-looking statements/projections based on new information, future events or otherwise except to the extent required by applicable laws.

Competent Person’s Statement

The information in this announcement relating to the assay results for the Hopes Hill project received as part of the drilling program announced to ASX on 3 February 2025 is based on, and fairly represents, information and supporting documentation prepared by Mr Travis Vernon, a member of the Australian Institute of Mining and Metallurgy (AusIMM) and a Qualified Person as defined by National Instrument 43-101. Mr. Vernon is the Geology Manager for Golden Horse Minerals and also holds securities in Golden Horse Minerals. Mr Vernon has sufficient experience that is relevant to the styles of mineralisation and type of deposits under consideration and to the activities which he is undertaking to qualify as a Competent Person as defined in the 2012 Edition of the Joint Ore Reserves Committee Australasian Code for Reporting of Exploration Results, Mineral Resources and Ore Reserves (**JORC Code**). Mr Vernon consents to the inclusion of the matters based on his information in the form and context in which they appear in this announcement.

The information in this announcement relating to historical exploration results was previously announced to the ASX by Golden Horse in the prospectus issued in connection with Golden Horse's ASX listing dated 12 December 2024 (**Prospectus**). The Company confirms that it is not aware of any new information or data that materially affects the information included in the Prospectus.

Qualified Person's Statement

Mr Travis Vernon, a member of the Australian Institute of Mining and Metallurgy (AusIMM) and a Qualified Person as defined by National Instrument 43-101, is responsible for the preparation of the technical content regarding the Southern Cross Project contained in this announcement. Mr. Vernon is the Geology Manager for Golden Horse Minerals and also holds securities in Golden Horse Minerals. Mr Vernon has reviewed and approved the technical disclosure in this announcement

Table 1: Hope Hill Stage 1 drill hole details

Hole	Hole Type	Depth	Grid	East	North	RL	Dip	Azimuth
GHHHRC0001	RC	204	MGA94_50	717345	6548004	365	-55.7	50.3
GHHHRC0002	RC	200	MGA94_50	717428	6547875	370	-55.2	47.0
GHHHRC0003	RC	234	MGA94_50	717392	6547924	370	-59.9	47.9
GHHHRC0004	RC	216	MGA94_50	717368	6547968	366	-60.0	49.8
GHHHRC0005	RC	234	MGA94_50	717488	6547815	371	-66.8	36.0
GHHHRC0006	RC	180	MGA94_50	717832	6547452	370	-60.5	48.9
GHHHRC0007	RC	186	MGA94_50	717802	6547450	369	-62.8	51.1
GHHHRC0008	RC	210	MGA94_50	717202	6548168	374	-59.2	49.6
GHHHRC0009	RC	168	MGA94_50	717099	6548302	386	-59.9	48.0
GHHHRC0010	RC	162	MGA94_50	717082	6548334	387	-54.9	49.2
GHHHRC0011	RC	162	MGA94_50	717053	6548353	386	-55.0	49.0
GHHHRC0012R	RC	162	MGA94_50	717037	6548410	388	-55.8	49.5
GHHHRC0013	RC	162	MGA94_50	717043	6548387	388	-55.7	47.1
GHHHRC0017	RC	180	MGA94_50	717146	6548240	368	-63.5	52.6

Table 2: Significant Gold Assay Intersections from Stage 1 drilling^{3,4}

Criteria: 0.5g/t cut-off, minimum 2m interval, maximum internal waste 2m

Hole	Depth From	Depth To	Intercept
GHHHRC0001	89	95	6.00m @ 4.29 ppm
GHHHRC0001	100	102	2.00m @ 0.54 ppm
GHHHRC0001	105	111	6.00m @ 4.77 ppm
GHHHRC0001	117	121	4.00m @ 1.19 ppm
GHHHRC0001	129	133	4.00m @ 2.67 ppm
GHHHRC0001	144	152	8.00m @ 9.16 ppm
GHHHRC0002	134	142	8.00m @ 1.24 ppm
GHHHRC0002	147	149	2.00m @ 2.45 ppm
GHHHRC0002	180	184	4.00m @ 1.01 ppm
GHHHRC0003	55	58	3.00m @ 0.44 ppm
GHHHRC0003	119	128	9.00m @ 2.35 ppm
GHHHRC0003	131	142	11.00m @ 0.52 ppm
GHHHRC0003	158	162	4.00m @ 0.69 ppm
GHHHRC0003	187	189	2.00m @ 1.09 ppm
GHHHRC0004	113	117	4.00m @ 2.91 ppm
GHHHRC0004	122	131	9.00m @ 1.55 ppm
GHHHRC0004	136	142	6.00m @ 1.65 ppm
GHHHRC0004	163	166	3.00m @ 0.76 ppm
GHHHRC0004	173	175	2.00m @ 0.98 ppm
GHHHRC0004	205	207	2.00m @ 10.56 ppm
GHHHRC0005	141	145	4.00m @ 0.94 ppm
GHHHRC0006	110	120	10.00m @ 0.80 ppm
GHHHRC0006	127	132	5.00m @ 1.18 ppm
GHHHRC0007	144	155	11.00m @ 2.83 ppm
GHHHRC0007	158	168	10.00m @ 2.85 ppm
GHHHRC0008	78	81	3.00m @ 0.82 ppm
GHHHRC0008	137	153	16.00m @ 1.56 ppm
GHHHRC0008	157	161	4.00m @ 0.65 ppm
GHHHRC0008	178	182	4.00m @ 0.42 ppm
GHHHRC0008	201	205	4.00m @ 2.22 ppm
GHHHRC0009	77	79	2.00m @ 0.80 ppm
GHHHRC0009	118	122	4.00m @ 0.49 ppm
GHHHRC0009	125	128	3.00m @ 0.99 ppm
GHHHRC0009	132	136	4.00m @ 0.99 ppm
GHHHRC0009	143	145	2.00m @ 0.80 ppm
GHHHRC0009	151	159	8.00m @ 1.77 ppm
GHHHRC0009	162	165	3.00m @ 0.79 ppm
GHHHRC0010	100	105	5.00m @ 0.40 ppm
GHHHRC0010	120	126	6.00m @ 2.23 ppm
GHHHRC0011	112	114	2.00m @ 3.30 ppm
GHHHRC0011	118	120	2.00m @ 3.04 ppm
GHHHRC0011	128	130	2.00m @ 1.24 ppm
GHHHRC0011	134	143	9.00m @ 3.34 ppm
GHHHRC0012R	90	96	6.00m @ 0.74 ppm
GHHHRC0013	53	57	4.00m @ 1.05 ppm

³ See also ASX announcement 18 February 2025: Outstanding Results from Phase 1 Hopes Hill Drilling.

⁴ See also ASX announcement 6 March 2025: Hope Hill Project Delivers Further Outstanding Results.

Hole	Depth From	Depth To	Intercept
GHHHRC0013	90	94	4.00m @ 1.44 ppm
GHHHRC0013	102	114	12.00m @ 0.71 ppm
GHHHRC0017	101	112	11.00m @ 0.59 ppm
GHHHRC0017	115	117	2.00m @ 21.43 ppm

Table 3: Significant Broad Mineralisation Zone Gold Assay Intersections from Stage 1 drilling^{5,6}

Criteria: From geologically based hanging wall to foot wall mineralised zones with no grade or internal waste restrictions.

Drill Hole	From	To	Interval	Intercept
GHHHRC0001	91	152	61	61m @ 2.5 g/t
GHHHRC0004	113	142	29	29m @ 1.3 g/t
GHHHRC0007	144	168	24	24m @ 2.5 g/t

JORC Code, 2012 Edition:

Section 1: Sampling Techniques and Data

(Criteria in this section apply to all succeeding sections.)

Criteria	JORC Code explanation	Commentary
<i>Sampling techniques</i>	<ul style="list-style-type: none"> <i>Nature and quality of sampling (e.g. cut channels, random chips, or specific specialised industry standard measurement tools appropriate to the minerals under investigation, such as down hole gamma sondes, or handheld XRF instruments, etc). These examples should not be taken as limiting the broad meaning of sampling.</i> <i>Include reference to measures taken to ensure sample representivity and the appropriate calibration of any measurement tools or systems used.</i> <i>Aspects of the determination of mineralisation that are Material to the Public Report.</i> <i>In cases where 'industry standard' work has been done this would be relatively simple (e.g. 'reverse circulation drilling was used to obtain 1 m samples from which 3 kg was pulverised to produce a 30 g charge for fire assay'). In other cases, more explanation</i> 	<ul style="list-style-type: none"> RC holes were sampled through an integrated cone splitter attached to the drill rig. 1.5-2kg samples were collected from the cone splitter into numbered calico bags. Duplicate samples collected periodically. Remainder of sample collected in green plastic bags. Samples collected to industry standard RC drilling practice with routine clearing of the splitter to reduce contamination.

⁵ See also ASX announcement 18 February 2025: Outstanding Results from Phase 1 Hopes Hill Drilling.

⁶ See also ASX announcement 6 March 2025: Hope Hill Project Delivers Further Outstanding Results.

Criteria	JORC Code explanation	Commentary
	<i>may be required, such as where there is coarse gold that has inherent sampling problems. Unusual commodities or mineralisation types (e.g. submarine nodules) may warrant disclosure of detailed information.</i>	
<i>Drilling techniques</i>	<ul style="list-style-type: none"> • <i>Drill type (e.g. core, reverse circulation, open-hole hammer, rotary air blast, auger, Bangka, sonic, etc) and details (e.g. core diameter, triple or standard tube, depth of diamond tails, face-sampling bit or other type, whether core is oriented and if so, by what method, etc).</i> 	<ul style="list-style-type: none"> • RC drilling was completed using a 5.5-inch face sampling hammer.
<i>Drill sample recovery</i>	<ul style="list-style-type: none"> • <i>Method of recording and assessing core and chip sample recoveries and results assessed.</i> • <i>Measures taken to maximise sample recovery and ensure representative nature of the samples.</i> • <i>Whether a relationship exists between sample recovery and grade and whether sample bias may have occurred due to preferential loss/gain of fine/coarse material.</i> 	<ul style="list-style-type: none"> • Standard drilling procedures employed to obtain representative samples. • Laboratory measured weight of each sample. • Wet samples were identified in the sample logging process. • No correlation identified between sample weight and gold grade.
<i>Logging</i>	<ul style="list-style-type: none"> • <i>Whether core and chip samples have been geologically and geotechnically logged to a level of detail to support appropriate Mineral Resource estimation, mining studies and metallurgical studies.</i> • <i>Whether logging is qualitative or quantitative in nature. Core (or costean, channel, etc) photography.</i> • <i>The total length and percentage of the relevant intersections logged.</i> 	<ul style="list-style-type: none"> • Geological logs have been completed on a 1m basis for all drilling. • Logging will aid geological interpretation in future resource estimation.
<i>Sub-sampling techniques and sample preparation</i>	<ul style="list-style-type: none"> • <i>If core, whether cut or sawn and whether quarter, half or all core taken.</i> • <i>If non-core, whether riffled, tube sampled, rotary split, etc and whether sampled wet or dry.</i> • <i>For all sample types, the nature, quality and appropriateness of the sample preparation technique.</i> • <i>Quality control procedures adopted for all sub-sampling stages to maximise samples representivity.</i> • <i>Measures taken to ensure that the sampling is representative of the in-situ material</i> 	<ul style="list-style-type: none"> • Samples passed through a rotary cone splitter to obtain a nominal 2kg sub-sample collected in pre-numbered calico bags. • Samples were assayed at Bureau Veritas in Perth. Samples were dried and pulverized prior to assay.

Criteria	JORC Code explanation	Commentary
	<p>collected, including for instance results for field duplicate/second-half sampling.</p> <ul style="list-style-type: none"> • Whether sample sizes are appropriate to the grain size of the material being sampled. 	
Quality of assay data and laboratory tests	<ul style="list-style-type: none"> • The nature, quality and appropriateness of the assaying and laboratory procedures used and whether the technique is considered partial or total. • For geophysical tools, spectrometers, handheld XRF instruments, etc, the parameters used in determining the analysis including instrument make and model, reading times, calibrations factors applied and their derivation, etc. • Nature of quality control procedures adopted (e.g. standards, blanks, duplicates, external laboratory checks) and whether acceptable levels of accuracy (ie lack of bias) and precision have been established. 	<ul style="list-style-type: none"> • Samples were submitted to Bureau Veritas for 50g Lead Collection Fire Assay analysis. • QA/QC sampling was undertaken using industry standards. • Standards and Blanks returned consistent values, Duplicates show some variability consistent with the variable nature of the veining and gold.
Verification of sampling and assaying	<ul style="list-style-type: none"> • The verification of significant intersections by either independent or alternative company personnel. • The use of twinned holes. • Documentation of primary data, data entry procedures, data verification, data storage (physical and electronic) protocols. • Discuss any adjustment to assay data. 	<ul style="list-style-type: none"> • Results are consistent with previous drilling in the area. • Hole twinning was completed to identify & confirm historic grades below the base of the historic Hopes Hill mine, indicating a similar location and tenor of mineralisation. • Drill logs recorded on paper and transcribed in electronic format. • All data stored and validated in Datashed by independent contractors.
Location of data points	<ul style="list-style-type: none"> • Accuracy and quality of surveys used to locate drill holes (collar and down-hole surveys), trenches, mine workings and other locations used in Mineral Resource estimation. • Specification of the grid system used. • Quality and adequacy of topographic control. 	<ul style="list-style-type: none"> • Location of holes was recorded using a handheld GPS. All holes, down hole surveyed using a Axis Champ Gyro Electronic multi-shot tool with readings at 3m intervals.
Data spacing and distribution	<ul style="list-style-type: none"> • Data spacing for reporting of Exploration Results. • Whether the data spacing, and distribution is sufficient to establish the degree of geological and grade continuity appropriate for the Mineral Resource and Ore Reserve 	<ul style="list-style-type: none"> • Drilling completed on a nominal 50m spacing • Some variation in spacing results from infilling of historical drilling.

Criteria	JORC Code explanation	Commentary
	<i>estimation procedure(s) and classifications applied.</i>	
<i>Orientation of data in relation to geological structure</i>	<ul style="list-style-type: none"> • <i>Whether the orientation of sampling achieves unbiased sampling of possible structures and the extent to which this is known, considering the deposit type.</i> • <i>If the relationship between the drilling orientation and the orientation of key mineralised structures is considered to have introduced a sampling bias, this should be assessed and reported if material.</i> 	<ul style="list-style-type: none"> • Drilling direction is considered to be an effective test. • Holes oriented perpendicular to strike dipping east to effectively test the steeply west dipping loads. • Drill holes are steepening up in the lower central zone, along with the southern zone of the drill program.
<i>Sample security</i>	<ul style="list-style-type: none"> • <i>The measures taken to ensure sample security.</i> 	<ul style="list-style-type: none"> • Samples submitted directly to Lab after collection in a secure yard in Southern Cross.
<i>Audits or reviews</i>	<ul style="list-style-type: none"> • <i>The results of any audits or reviews of sampling techniques and data.</i> 	<ul style="list-style-type: none"> • Sampling and assaying techniques are industry standard. • Preliminary analysis of the QAQC data completed through the data management consultants - no significant issues identified.

Section 2: Reporting of Exploration Results

(Criteria listed in the preceding section also apply to this section.)

Criteria	JORC Code explanation	Commentary
<i>Mineral tenement and land tenure status</i>	<ul style="list-style-type: none"> • <i>Type, reference name/number, location and ownership including agreements or material issues with third parties such as joint ventures, partnerships, overriding royalties, native title interests, historical sites, wilderness or national park and environmental settings.</i> • <i>The security of the tenure held at the time of reporting along with any known impediments to obtaining a licence to operate in the area.</i> 	<ul style="list-style-type: none"> • Hopes Hill is located approximately 8km north of Southern Cross. • Drilling confined to granted tenements M77/1296, E77/2658 & M77/551. • Tenements in good standing with no known impediments.

Criteria	JORC Code explanation	Commentary
Exploration done by other parties.	<ul style="list-style-type: none"> Acknowledgment and appraisal of exploration by other parties. 	<ul style="list-style-type: none"> No significant work completed in the past 20 years. Prior to that several companies completed drilling in and around the workings including Broken Hill Metals. The main historic mine at Hopes Hill is a 1.3km long 90m deep mined in the 1980/90's. Refer to Independent Technical Assessment Report in GHM's prospectus for its ASX listing, released by ASX on 12 December 2024, for further information historical exploration activities.
Geology	<ul style="list-style-type: none"> Deposit type, geological setting and style of mineralisation. 	<ul style="list-style-type: none"> The geological target is a typical structurally hosted orogenic gold mineralisation zone proximal to lithological contacts between volcanics and sediments. Mineralisation is associated with quartz veining and alteration (e.g. sericite, silica).
Drill hole Information	<ul style="list-style-type: none"> A summary of all information material to the understanding of the exploration results including a tabulation of the following information for all Material drill holes: <ul style="list-style-type: none"> easting and northing of the drill hole collar elevation or RL (Reduced Level - elevation above sea level in metres) of the drill hole collar dip and azimuth of the hole down hole length and interception depth hole length. If the exclusion of this information is justified on the basis that the information 	<ul style="list-style-type: none"> Location of drillholes defined using handheld GPS. Northing and Easting data generally within +/-0.02 accuracy. RL data +/- 0.1m. Dip and azimuth measured using a digital Axis Champ gyro tool. Accuracy tolerance +/-0.75°. Down hole length accuracy estimated as +/- 0.2m. See Table 1 for drill hole details. See Tables 2 and 3 for list of significant intercepts.

Criteria	JORC Code explanation	Commentary
	<p><i>is not Material and this exclusion does not detract from the understanding of the report, the Competent Person should clearly explain why this is the case.</i></p>	
Data aggregation methods	<ul style="list-style-type: none"> <i>In reporting Exploration Results, weighting averaging techniques, maximum and/or minimum grade truncations (e.g. cutting of high grades) and cut-off grades are usually Material and should be stated.</i> <i>Where aggregate intercepts incorporate short lengths of high-grade results and longer lengths of low-grade results, the procedure used for such aggregation should be stated and some typical examples of such aggregations should be shown in detail. The assumptions used for any reporting of metal equivalent values should be clearly stated.</i> 	<ul style="list-style-type: none"> Significant gold intercepts quoted and calculated based on a minimum grade of 0.5g/t with no more than 2m of internal waste. No top cut applied. The broad mineralised intervals quoted: 61m@2.5g/t Au, 29m@1.3g/t Au, 24m@1.9g/t Au and, 14m@2.8g/t Au have no maximum length of internal waste included in their calculation.
Relationship between mineralisation widths and intercept lengths	<ul style="list-style-type: none"> <i>These relationships are particularly important in the reporting of Exploration Results.</i> <ul style="list-style-type: none"> <i>If the geometry of the mineralisation with respect to the drill hole angle is known, its nature should be reported.</i> <i>If it is not known and only the down hole lengths are reported, there should be a clear statement to this effect (e.g. 'down hole length, true width not known').</i> 	<ul style="list-style-type: none"> Holes drilled perpendicular to strike with planned azimuth at 49 degrees. Mineralisation is interpreted to dip west at approximately 70 - 80 degrees. True width is variable along strike due to the nature of the boudinaged mineralised geometry but is likely to be ~50-60% of the down hole intercept length quoted.
Diagrams	<ul style="list-style-type: none"> <i>Appropriate maps and sections (with scales) and tabulations of intercepts should be included for any significant discovery being reported These should include but not be limited to a plan view of drill hole collar locations and appropriate sectional views.</i> 	<ul style="list-style-type: none"> Plans section and diagrams included in the announcement. The data has been presented using appropriate scales and using standard aggregating techniques. Geological and mineralisation interpretations are based on current knowledge and will change

Criteria	JORC Code explanation	Commentary
		with further exploration.
<i>Balanced reporting</i>	<ul style="list-style-type: none"> Where comprehensive reporting of all Exploration Results is not practicable, representative reporting of both low and high grades and/or widths should be practiced to avoid misleading reporting of Exploration Results. 	<ul style="list-style-type: none"> This announcement adequately summarises work completed, historical work and future developments. Balanced reporting undertaken.
<i>Other substantive exploration data</i>	<ul style="list-style-type: none"> Other exploration data, if meaningful and material, should be reported including (but not limited to): geological observations; geophysical survey results; geochemical survey results; bulk samples – size and method of treatment; metallurgical test results; bulk density, groundwater, geotechnical and rock characteristics; potential deleterious or contaminating substances. 	<ul style="list-style-type: none"> No other material data collected in the latest drilling campaign. Previous drilling at the project is summarized in GHM's Prospectus for listing on the ASX - released by ASX on 12 December 2024.
<i>Further work</i>	<ul style="list-style-type: none"> The nature and scale of planned further work (e.g. tests for lateral extensions or depth extensions or large-scale step-out drilling). Diagrams clearly highlighting the areas of possible extensions, including the main geological interpretations and future drilling areas, provided this information is not commercially sensitive. 	<ul style="list-style-type: none"> Infill drilling is planned to further test the mineralisation down dip and along strike. Bottle roll tests planned to indicate metallurgical properties. Resource estimation planned following further drilling.